



DASHBOARD

INSTALLATION GUIDE



Table of Contents

1	CONTENTS.....	4
2	PREREQUISITES	4
2.1	PROCESSOR	4
2.2	MEMORY.....	4
2.3	DISK SPACE.....	4
2.4	OPERATING SYSTEM	4
2.5	SOFTWARE PREREQUISITES	4
2.6	GRAPHIC ENGINE.....	4
2.7	INTERNET CONNECTIVITY	5
3	QUICK INSTALLATION GUIDE	6
3.1	INSTALL DASHBOARD	6
3.2	CONFIGURE DASHBOARD	6
3.3	USING DASHBOARD	6
4	INSTALLATION.....	7
4.1	REQUIREMENT.....	7
4.2	INSTALL DASHBOARD	7
4.2.1	<i>Step 1 - Start installation</i>	<i>7</i>
4.2.2	<i>Step 2 – Installer language selection.....</i>	<i>7</i>
4.2.3	<i>Step 3 – Install Dashboard setup prerequisite</i>	<i>7</i>
4.2.4	<i>Step 4 - Install the Dashboard</i>	<i>9</i>
4.2.5	<i>Step 5 – Remove previously installed Dashboard application.....</i>	<i>9</i>
4.2.6	<i>Step 6 – Installing Dashboard application.....</i>	<i>11</i>
4.2.7	<i>Step 7 - Install the Dana licensed dongle device driver</i>	<i>13</i>
4.2.8	<i>Step 8 - Install the Dashboard’s additional components.....</i>	<i>18</i>
5	UNINSTALL DASHBOARD MANUALLY	19
6	CONFIGURE AND RUN DASHBOARD	21
6.1	CONFIGURE THE DANA LICENSED DONGLE FOR RP1210 USAGE	21
6.2	CONNECTING THE DANA LICENSED DONGLE TO YOUR VEHICLE.....	24
6.3	CONNECTING THE RS232 DANA LICENSED DONGLE TO YOUR VEHICLE.....	25
6.4	START RECOVERY MODE	26
6.5	AUTOFLASH.....	27
6.5.1	<i>Communication.....</i>	<i>27</i>
6.5.2	<i>Download new firmware.....</i>	<i>27</i>
6.5.3	<i>Download controller parameters.....</i>	<i>27</i>
6.5.4	<i>Restore serial numbers.....</i>	<i>28</i>
7	APPENDIX.....	29
7.1	CONFIGURING GDE/APT TOOL COMMUNICATION	29



8	FREQUENTLY ASKED QUESTIONS.....	30
8.1	TRUBLESHOOTING WHILE STARTING UP DASHBOARD.	30
8.1.1	<i>Driver was not found.</i>	30
8.1.2	<i>Invalid or no dana licensed dongle found.....</i>	30
8.1.3	<i>Invalid license key found.....</i>	30
8.1.4	<i>Dashboard cannot get necessary information</i>	30
8.2	TRUBLESHOOTING WHILE RUNNING DASHBOARD.	32
8.2.1	<i>No communication with APC.....</i>	32



1 Contents

This document is a guideline on how to install Dashboard. Follow it step by step to complete the installation. However, this is not a user manual on how to use Dashboard! For any help related topics, view the help files. You can access the help files by clicking “Help - Help” in the menu bar of the Dashboard or by using the Windows Start->Programs menu -> Dana -> Dashboard.

2 Prerequisites

2.1 Processor

Pentium-compatible PC 2.0GHz or higher (Pentium III, Athlon or more recent system recommended).

2.2 Memory

Minimum 2 GB RAM (2 + GB recommended).

2.3 Disk Space

Minimum available disk space of 1GB (2GB or higher recommended).

2.4 Operating system

- Windows 7 32 and 64 bit
- Windows 8 32 and 64 bit
- Windows 10 32 and 64 bit

Supported Languages are: English (US), French, German, Italian, and Spanish.
Other Operating Systems are not supported.

REMARK: The supported operating systems require a user account to log on. Make sure the user account you will be using to install the Dashboard has **Administrator** privileges, otherwise you will not be able to perform the installation!

2.5 Software Prerequisites

- .NET Framework 4.0 (included)
- Dana licensed dongle device driver v 5.3.0 or later (included)

2.6 Graphic engine

1024 x 764 resolution or higher is recommended!



2.7 Internet Connectivity

Make sure that the PC on which dashboard tool is going to installed, is connected to internet at the time of installation.



3 Quick installation guide

3.1 Install Dashboard

The installer will install all prerequisites automatically (.NET framework, Dana licensed dongle device driver, Dashboard, APT/GDE tool, Flash tool). See section 4.2

Install Dashboard for more information.

You will need the license key provided in the mail to install Dashboard.

3.2 Configure Dashboard

After the installation has finished you will need to configure the Dana licensed dongle to be able to use Dashboard. Plug in the Dana licensed dongle to the PC, windows will automatically detect it and install its device driver.

Open the “isCAN driver config” application and configure a new USB device.
Go to Start -> ifak system -> CAN -> isCAN driver config.

REMARK: The “ifak system” menu option will only be visible if you use the “Classic Start Menu” option. If you don’t, then you can access the configuration tool, using the following path: “C:\Program Files\IFAK system\isCanUSB\bin\CanDriverConfig.exe”.

For more information on configuring your Dana licensed dongle please see section 6.1 Configure the Dana licensed dongle for RP1210 usage.

3.3 Using Dashboard

After installation and configuration was successful Dashboard can be used. Dashboard will automatically set up and communicate with the attached controller.

For trouble shooting and additional information please see section 0 Dashboard Recovery Mode (DRM) and section 8 Frequently Asked Questions.



4 Installation

4.1 Requirement

On an Asian language based operating system, the Unicode language needs to be set on English (US). This can be done via the regional settings in the control panel.

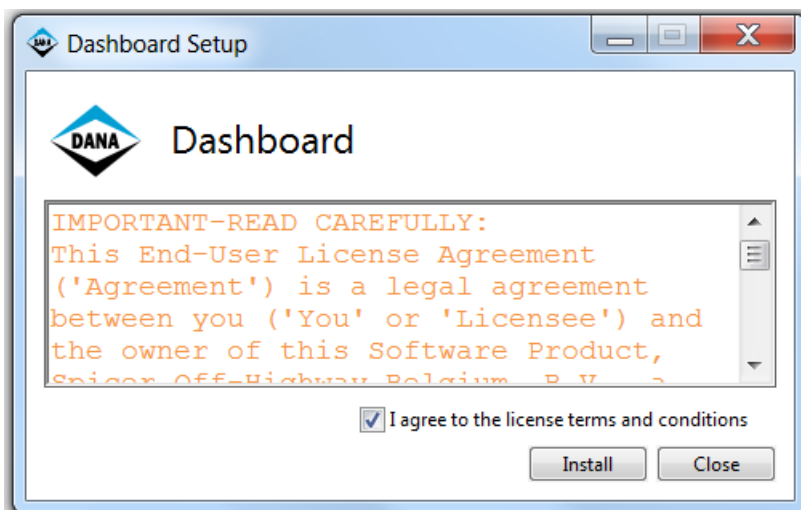
4.2 Install Dashboard

4.2.1 Step 1 - Start installation

After downloading a Dashboard application from the dana FTP server, extract the application zip file using the password provided in the release mail. Double click “DashboardSetup.exe” available in the application folder to start the installation.

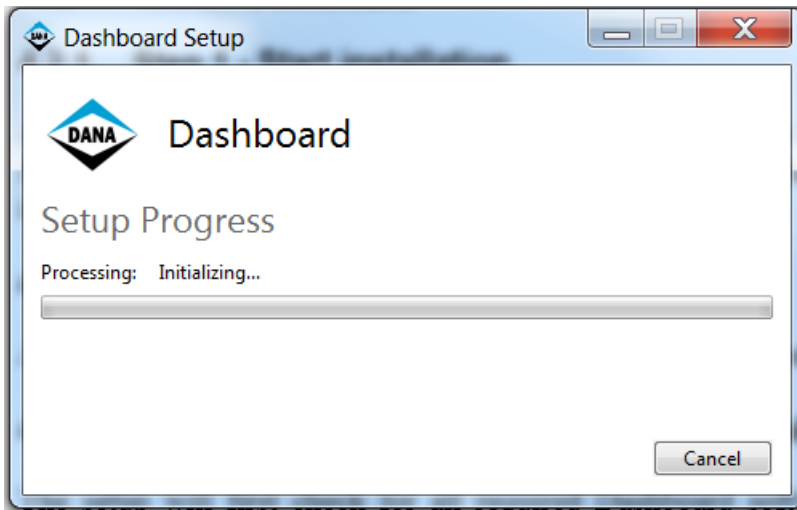
4.2.2 Step 2 – Installer language selection

As per the user computer regional settings, installer will select its installation language. Select I Agree checkbox to enable Install button. Click Install button to start the installation.



4.2.3 Step 3 – Install Dashboard setup prerequisite

The setup will first check for all required Dashboard software prerequisites and automatically install them if they are missing on user's machine.





4.2.4 Step 4 - Install the Dashboard

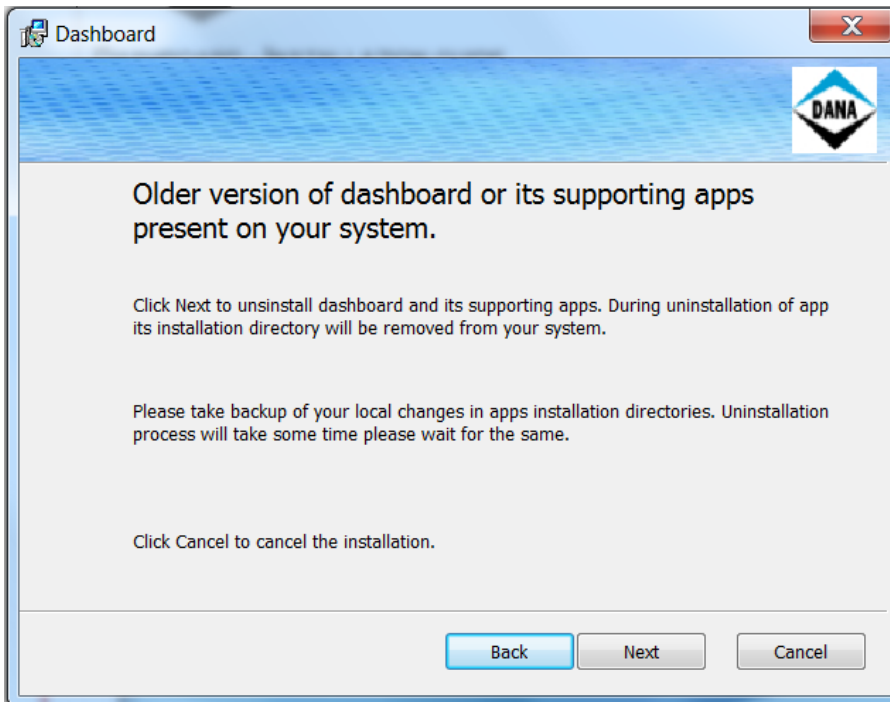
After finishing installation of all Dashboard prerequisites, the setup will start initializing Dashboard application installation. After initialization of the installation, you will get the following screen:



Click "Next" button to continue.

4.2.5 Step 5 – Remove previously installed Dashboard application.

If a previous version of the Dashboard application is installed the setup will remove this previously installed Dashboard application automatically before installing the new application.



Click Next to uninstall previous dashboard application automatically. Upon completing uninstallation of old dashboard tool and its supporting apps, installer will move to next step.

Sometimes it can happen that it is not successful to uninstall Dashboard automatically. Please read chapter 5 Uninstall Dashboard manually.

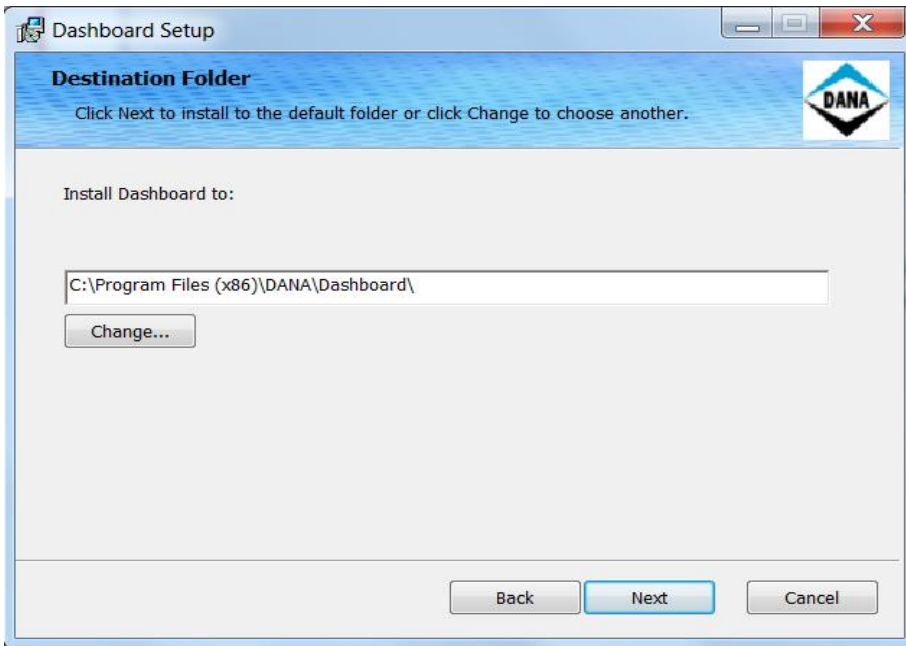


4.2.6 Step 6 – Installing Dashboard application

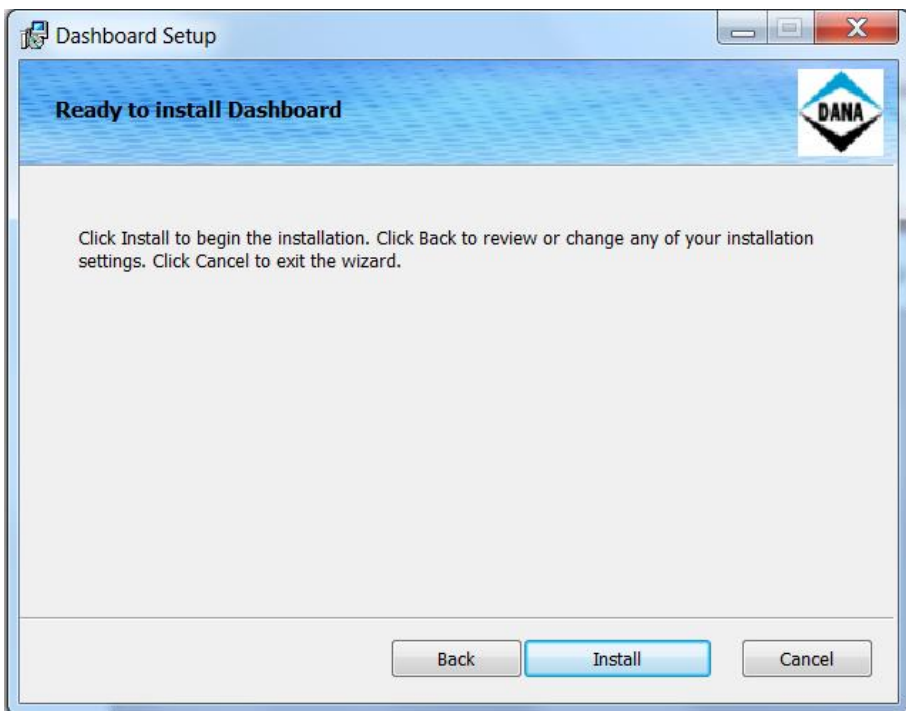
1. Fill out the following form. In the “User Name” box, fill in your name. In the “Company Name” box, fill in your company name. In the “Serial Number” box, fill in the serial number: **ZK3-ZU7q-Wmm**, Click “Next”.

The screenshot shows a Windows-style dialog box titled "Dashboard". The main content area has a blue header with the DANA logo and the text "Customer Information" and "Please enter your information". Below this, there are three input fields: "User Name:" with the text "Windows User", "Company Name:" with the text "Your Company", and "Serial Number:" with a masked format "xxx - xxx - xxx". At the bottom of the dialog box, there are three buttons: "Back", "Next", and "Cancel".

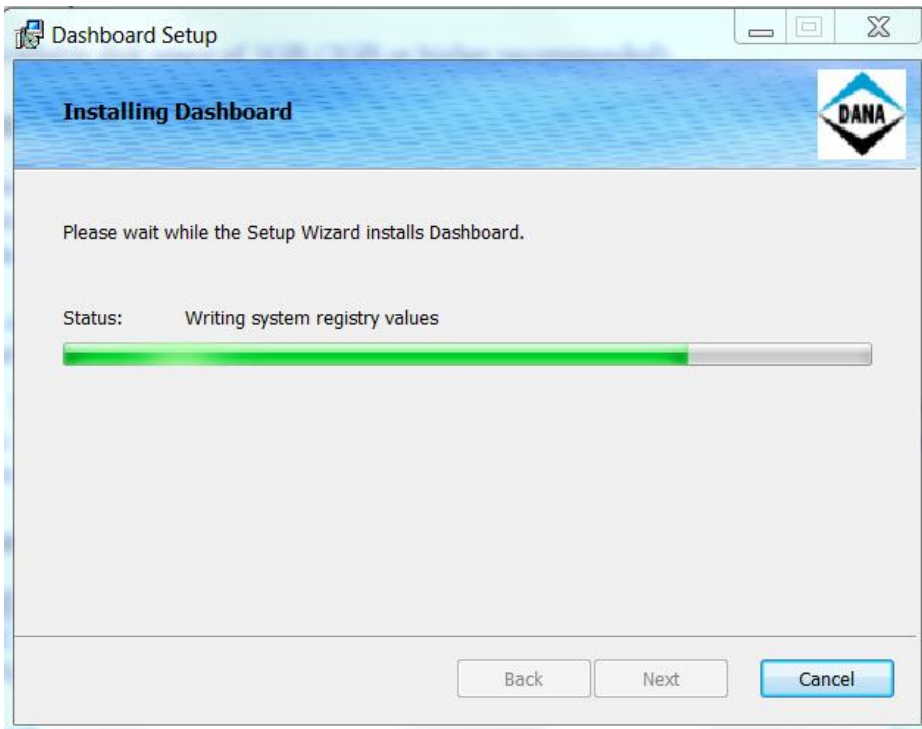
3. By default, “Program Files” is selected a preferred dashboard tool installation destination folder. User can change default destination path by clicking on “Browse” button and selecting his preferred installation directory. Click “Next” button to continue.



4. The following screen will ask user to confirm the start of installation process. Click the “Install” button to start installation.



5. Please wait while the Dashboard is installing its features.



6. After finishing installation of dashboard tool following window will come up. Click Finish button to finish dashboard tool installation and start its supporting tool installation.

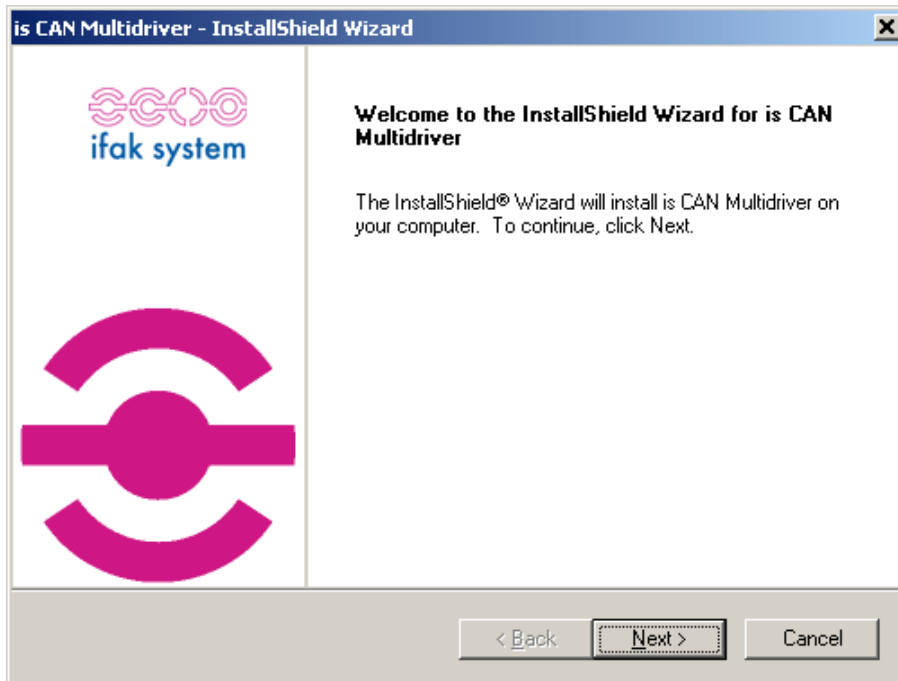


4.2.7 Step 7 - Install the Dana licensed dongle device driver



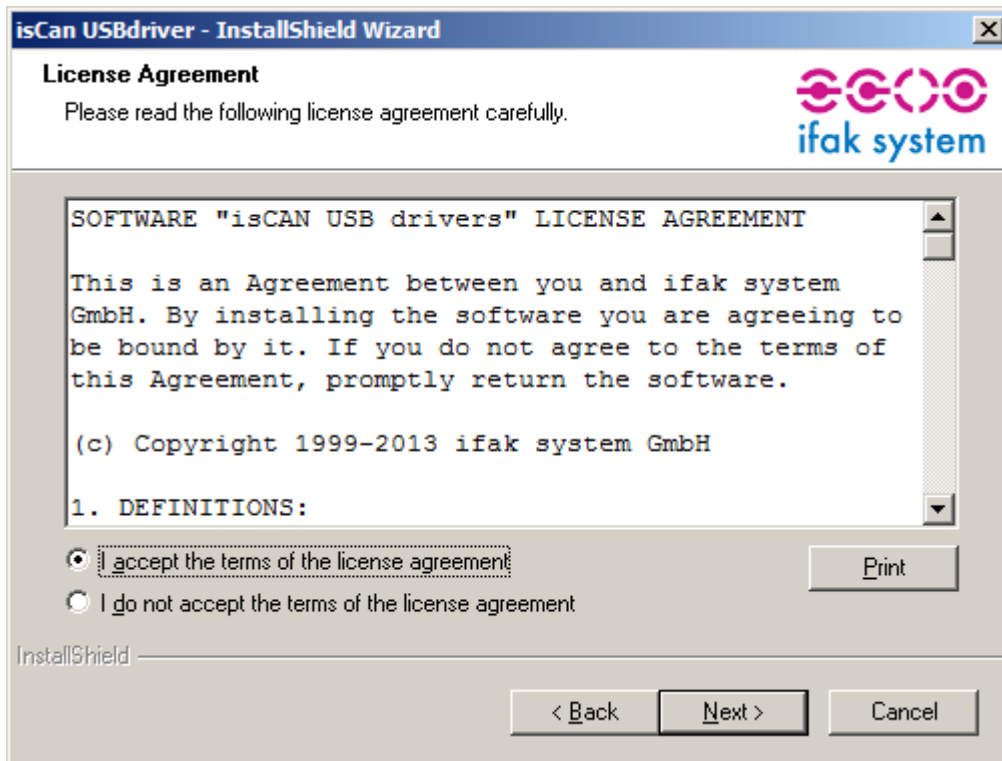
If the Dana licensed dongle device driver setup is not able to determine the installation language it will ask the user to select the installation language from installation languages supported by the Dana licensed dongle device driver setup.

After selecting the setup language following window will pop up.

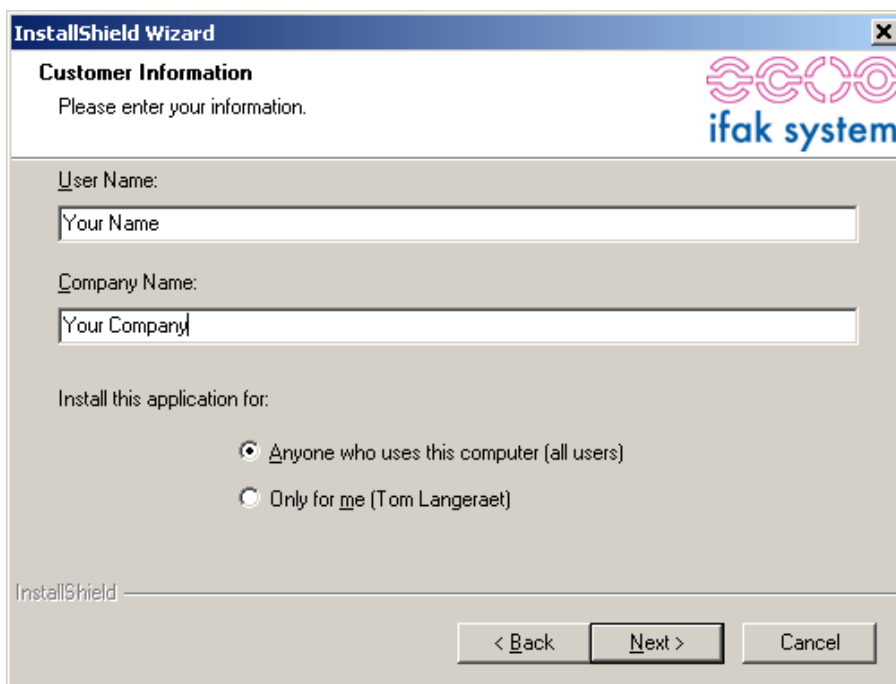


Click “Next” button to proceed.

After pressing the “Next” button the license agreement window will come up. The user needs to accept this license agreement and then click the “Next” button to proceed.



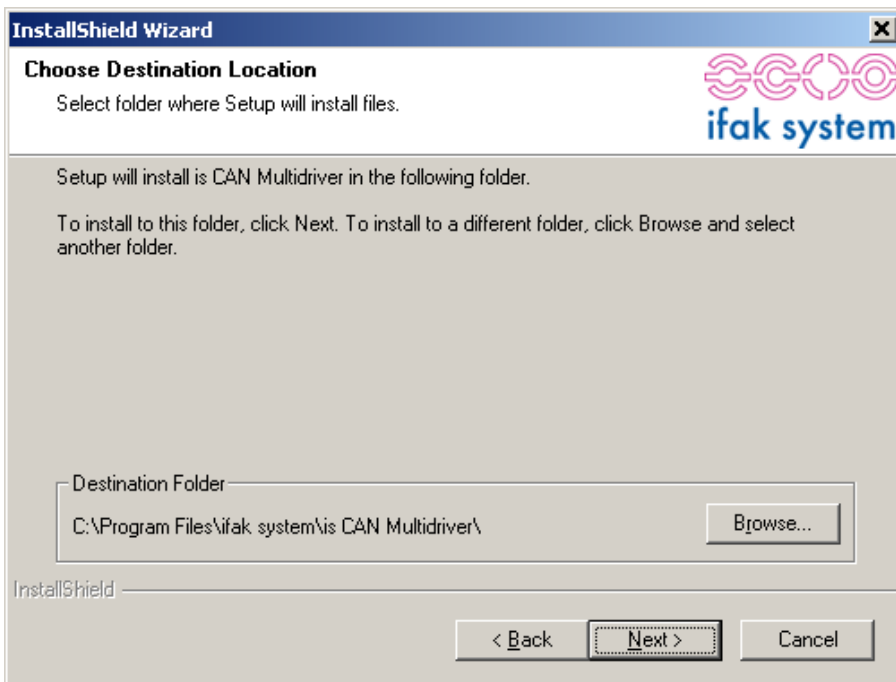
In the “User Name” box, fill in your user name. In the “Company Name” box, fill in your company name.



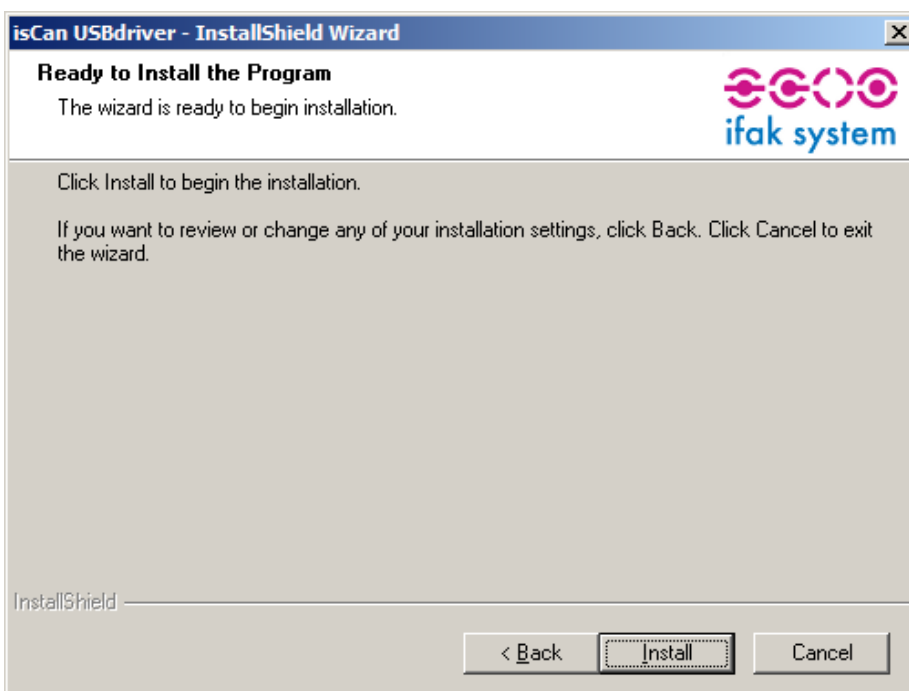
Click “Next” button to proceed.



Select a destination folder to install the Dana licensed dongle's device driver. Click the "Next" button to proceed.

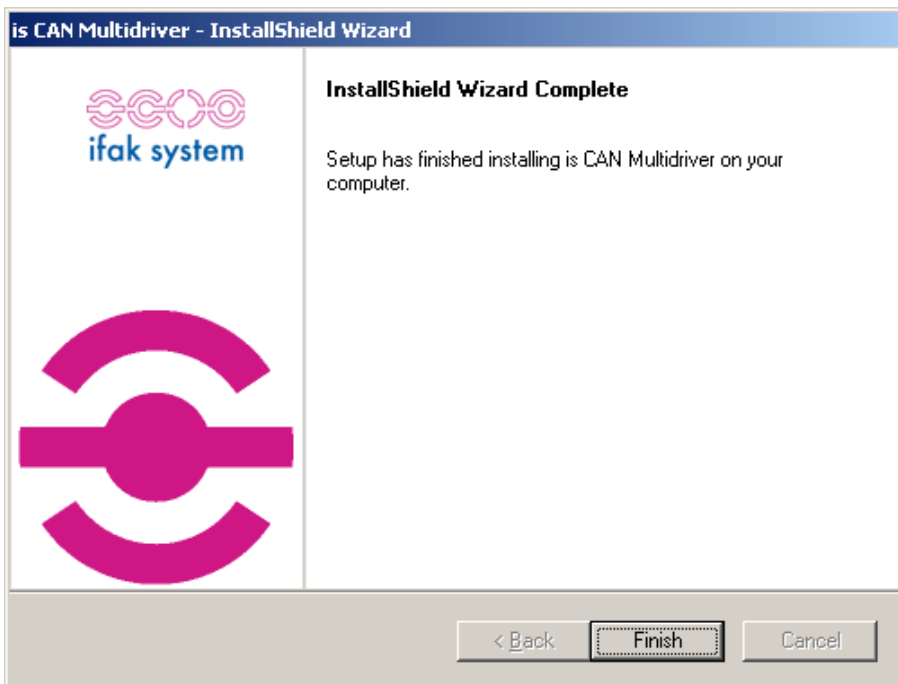


Click the "Install" button to proceed with installation.





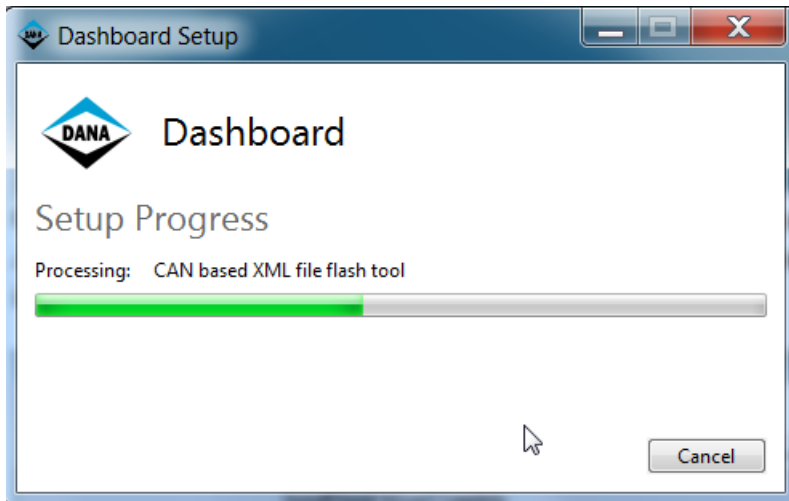
After finishing installation following screen will come up. Click on the “Finish” button to complete the installation.



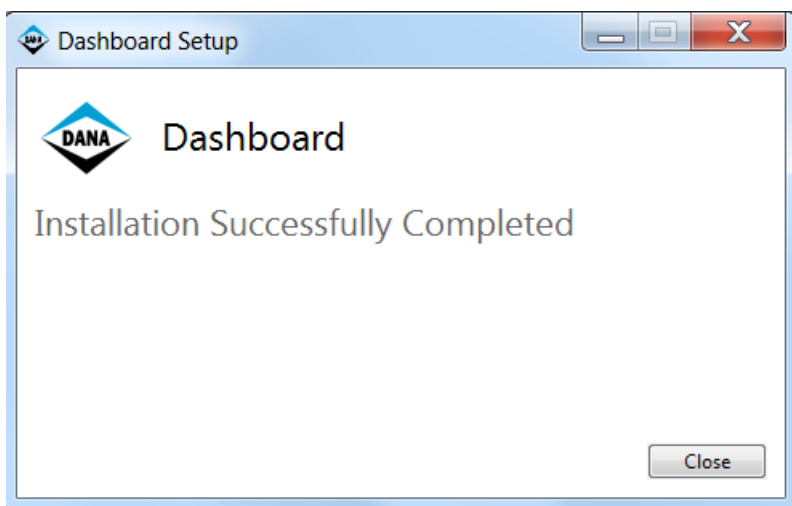


4.2.8 Step 8 - Install the Dashboard's additional components.

After finishing the installation of dana licensed dongle's device drivers, the setup will automatically start installing the firmware patch, APT, GDE and flash tools supported by Dashboard. The setup will display information of tool which are currently being installed.



Once all the additional tools are installed, step 8 of your installation is complete. After finishing step 8, Dashboard installation is completed. Click the "Close" button to finish installation of Dashboard.



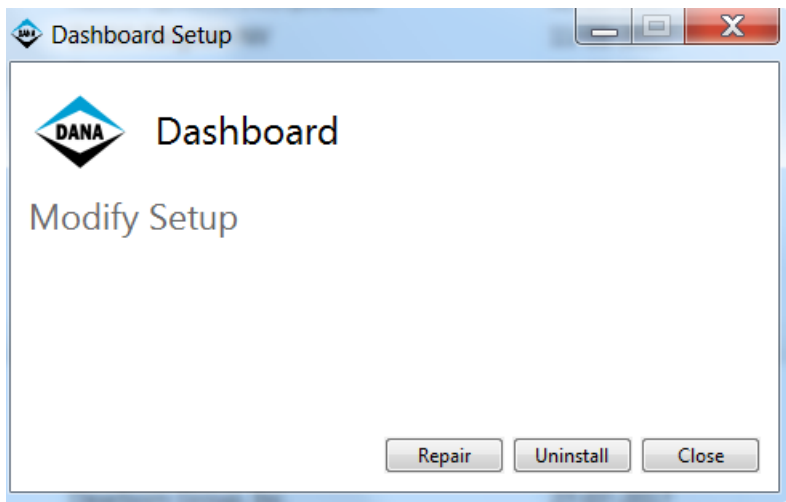


5 Uninstall Dashboard manually

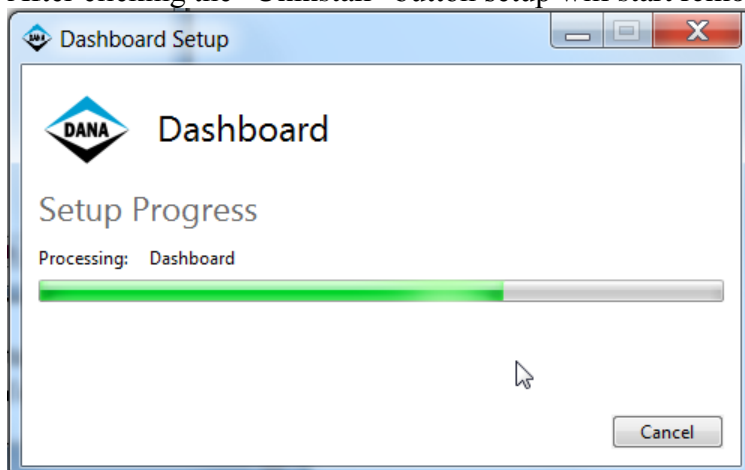
Because of some incompatibility reasons, some older Dashboard applications cannot be removed automatically. Therefore it is recommended to manually uninstall the previously installed Dashboard application.

In order to remove the older version of Dashboard manually please follow the steps mentioned below.

1. Go to the Windows “Control Panel -> Add or remove programs”.
2. Select Dashboard firmware patch and then click “Change/Remove” button.
3. It is important to first remove this firmware patch because otherwise there will be problems with completely removing Dashboard, causing incorrect firmware patches to be available.
4. Select Dashboard application installed and then click “Change/Remove” button.
5. After clicking Change/Remove” button following window comes up. Now select remove and click “Next” button to remove Dashboard.

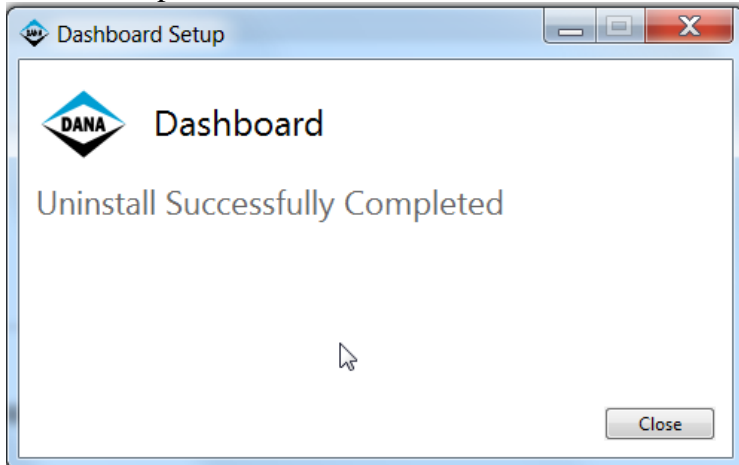


6. After clicking the “Uninstall” button setup will start removing the Dashboard application.





7. After finishing uninstallation following window will pop up. Click the “Finish” button to complete uninstallation.



REMARK: Uninstallation procedure will not remove changes done by the user in the Dashboard installation directory and because of this the Dashboard directory sometimes remains in the program files folder even after uninstallation of Dashboard. Check Program files -> DANA folder for the presence of the Dashboard directory and if the Dashboard directory exists delete it.



6 Configure and run Dashboard

6.1 Configure the Dana licensed dongle for RP1210 usage

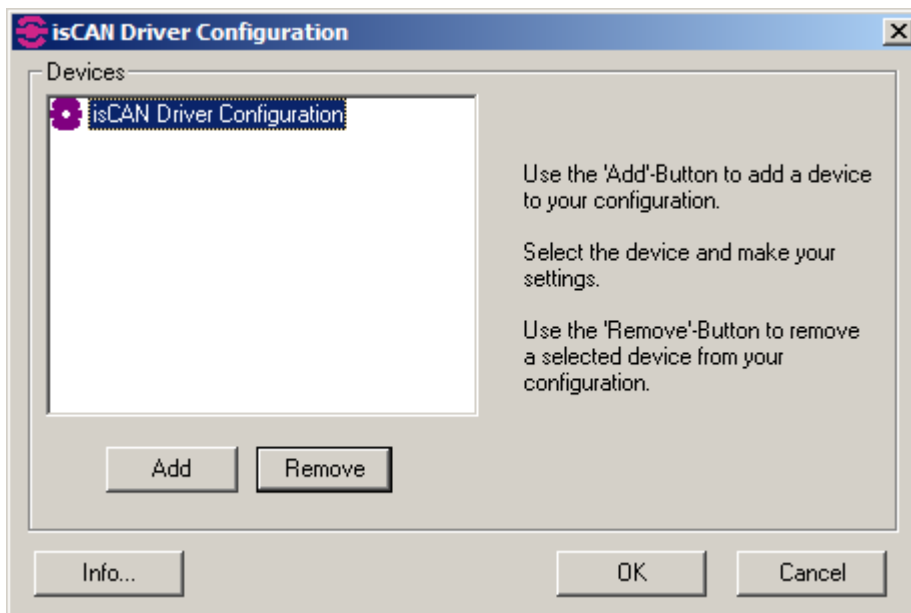
The RP1210A standard offers a way of communication using USB to CAN devices. However the RP1210A standard does not describe any plug and play functionality. Thus, configuring the hardware device manually, before getting started cannot be avoided.

To configure Dana licensed dongle for RP1210 usage follow the procedure mentioned below:

1. Go to Start -> ifak system -> CAN -> isCAN driver config.

REMARK: The “ifak system” menu option will only be visible if you use the “Classic Start Menu” option. If you don’t, then you can access the configuration tool, using the following path: “C:\Program Files\IFAK system\isCanUSB\bin\CanDriverConfig.exe”.

2. Following window will come up. Click the “Add” button to add the attached USB device.

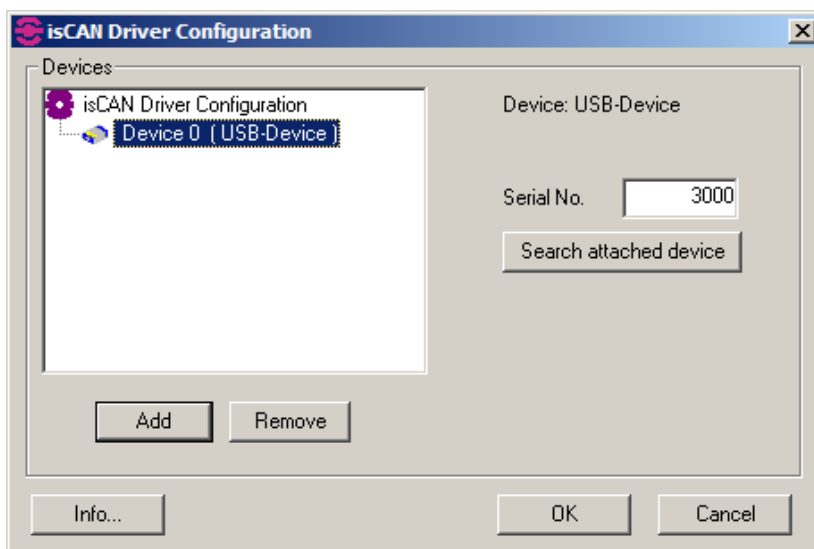




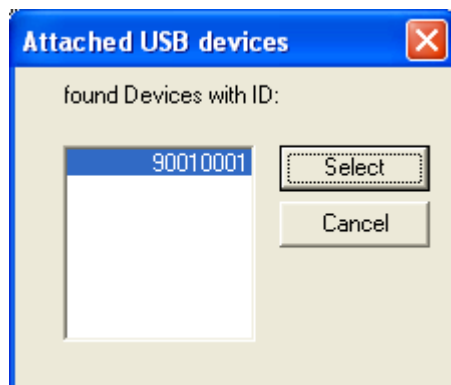
3. Select USB as device type and then click the “Ok” button



4. Select the added device and click the “Search attached device” button.

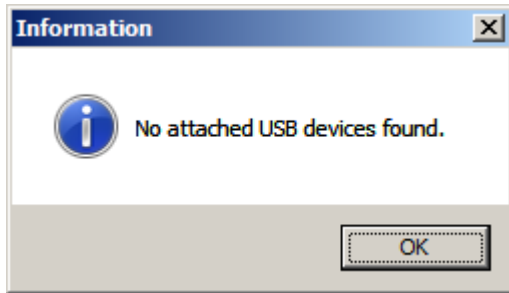


5. From the list of attached devices please select the device you want to use and press the “Select” button.

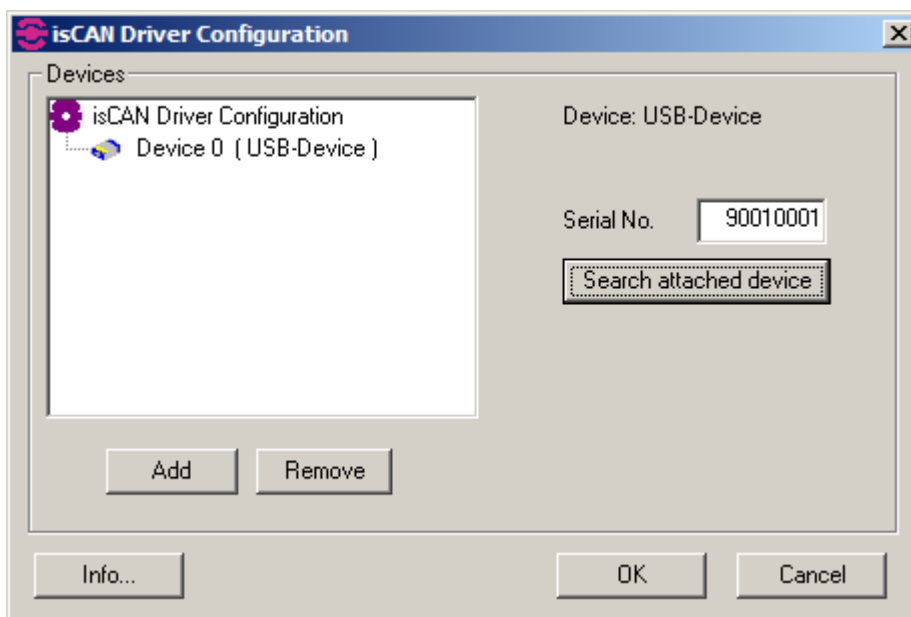




6. If no devices are attached the application will display following warning message



7. After selecting the Dana licensed dongle to be used following window will come up, click the “Ok” button to close the configuration window and apply your changes.



Clicking “OK” will close the configuration window and apply your changes.

This only has to be done once, for every different hardware device you plug in. Always add new devices in the configuration window, instead of changing the configuration of an existing device. This will allow you to add as many devices as you want, without going through this configuration again. Each known hardware dongle you plug in, will be recognized by Dashboard.

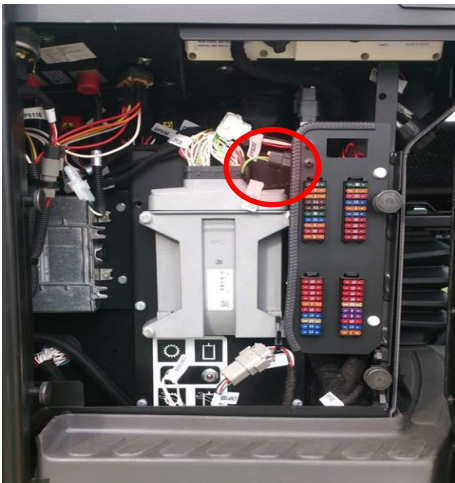
Installation and configuration is finished now and you can start using Dashboard.



6.2 Connecting the Dana licensed dongle to your vehicle

Use the following image to connect the IFAK Dana licensed dongle to the vehicle.

CLASS V “Big Truck 8 – 52 Ton and Reach Stackers with Vista Cab” connect to Diagnostic CAN connector in CABIN “Side Console Compartment”



CLASS V “Big Truck A404 Reach Stacker” connect to Diagnostic Powertrain CAN connector in CABIN “Fuse panel”





CLASS V “Counter Balance 6-9 Ton Forklift” connect to Diagnostic CAN connector at “Steering Column”

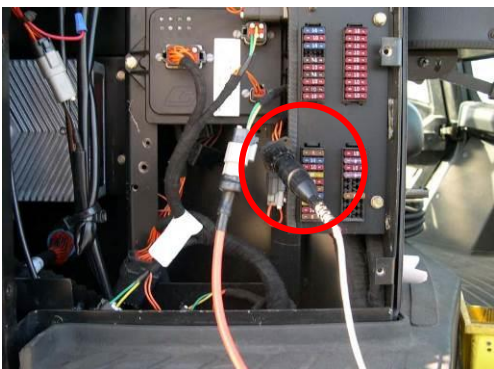


6.3 Connecting the RS232 Dana licensed dongle to your vehicle

Use the following image to connect the RS232 Dana licensed dongle to the vehicle:

1. Required for older trucks without CAN connection.
2. Required for programming older trucks with older Transmission firmware without preparation to program firmware via CAN per IFAK dongle.

CLASS V “Big Truck 8 –52 Ton” connect to Diagnostic RS232 connector in CABIN “Side Console Compartment”



Note: CLASS V “Big Truck Reach Stackers” connect to Diagnostic RS232 connector in Battery compartment (close to where APC transmission controller is mounted).



Dashboard Recovery Mode (DRM)

6.4 Start Recovery Mode

Since some parameter settings were missing, the Dashboard could not determine your controller model transmission model. Please select your transmission model from the list.

Dashboard Recovery Mode

You have chosen to activate the APC Recovery Mode.
This mode only provides APC programming functionality with manual selection.

To shutdown the application, click Exit.
To continue to the APC Recovery Mode,
please select the connected product from the list and click Recovery.

- Dashboard database for transmission model A
- Dashboard database for transmission model B
- Dashboard database for transmission model C

Please enter your license key to confirm.

Exit Recovery

If you have selected your transmission model, please enter your active license key to confirm.

Dashboard Recovery Mode

You have chosen to activate the APC Recovery Mode.
This mode only provides APC programming functionality with manual selection.

To shutdown the application, click Exit.
To continue to the APC Recovery Mode,
please select the connected product from the list and click Recovery.

- Dashboard database for transmission model A
- Dashboard database for transmission model B
- Dashboard database for transmission model C

Please enter your license key to confirm.

lic-ense-key

Exit Recovery



Click “Recover” to launch the Dashboard software. All functions will be disabled, except for the “Settings” window, where you can go to the tab page “AutoFlash”. With the “AutoFlash” you can perform the last step of the recovery procedure, which is to upgrade the controller software and parameter file to the latest version, with the license settings to use Dashboard.

6.5 AutoFlash

This procedure is meant to perform an upgrade of your transmission controller. You will be lead through 2 steps, updating your controller software (firmware) and the controller parameters (apt file).

REMARK: before you start the AutoFlash procedure, make sure your ignition is turned on, so the software can detect the CAN bootloader of the controller.

6.5.1 Communication

If the CAN option is available, it is recommended to use this option. It will require no manual interventions to prepare your controller. If RS232 is used (only available for APC21x), it would require you to reboot the controller into bootstrap mode, while pushing the M and S button at startup of the controller. RS232 also requires an additional cable.

6.5.2 Download new firmware

If there is a decision table (DCT) available, the user does not have to select the firmware. Dashboard can read what combination of firmware and apt file is inside the controller. Depending on this combination and the definition in the decision table, it will automatically select the proper firmware to download into the controller.

If no decision table is available, the user has to select the controller application to download by clicking an item in the tree view on the right.

Click “Start” to download the selected controller application and wait while the download is in progress.

6.5.3 Download controller parameters

If a decision table is available, the selection of a matching parameter file will be done automatically. When the decision table is not available, you will be able to select the matching parameter file. Select the apt file from the right, where you will find a filtered list of all available apt files, matching the firmware you have just downloaded.

Click “Start” to download the selected parameter file and wait while the download is in progress.



6.5.4 Restore serial numbers

After downloading the parameter file, some serial numbers like transmission s/n, vehicle id, configset id will be restored. Click “Next” to continue.

After this step, you might get the warning that all calibration data is lost. For some transmissions, you will need to recalibrate!

Click “Finish” to end the AutoFlash.



7 Appendix

7.1 Configuring GDE/APT tool communication

The standard communication is via serial connection. Because the Dana licensed dongle is CAN based; you will have to change this setting in the APT and GDE tools.





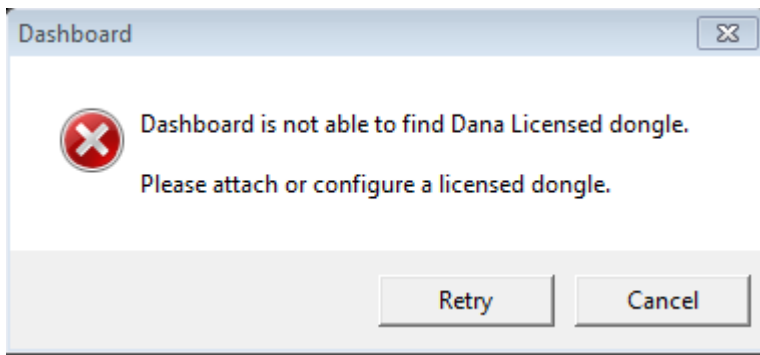
8 Frequently Asked Questions

8.1 Troubleshooting while starting up Dashboard.

8.1.1 Driver was not found.

Dashboard will not start if the Dana licensed dongle device driver is not found. If this error occurs, try to re-install the Dashboard in order to install the correct Dana licensed dongle device drivers.

8.1.2 Invalid or no dana licensed dongle found.

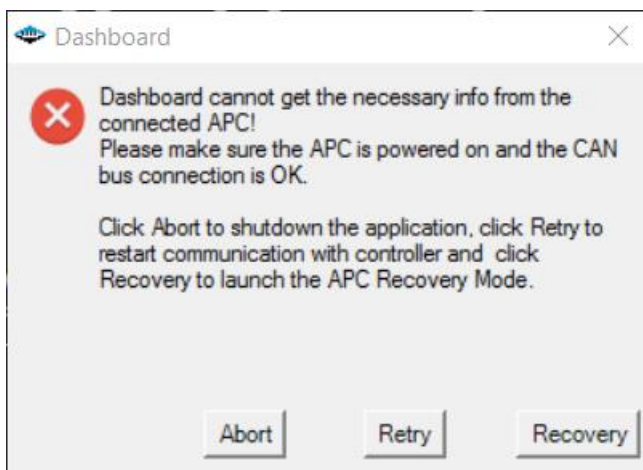


Dashboard will only start with an officially licensed Dana dongle. If you do not have a Dana licensed dongle then please contact your local supplier.

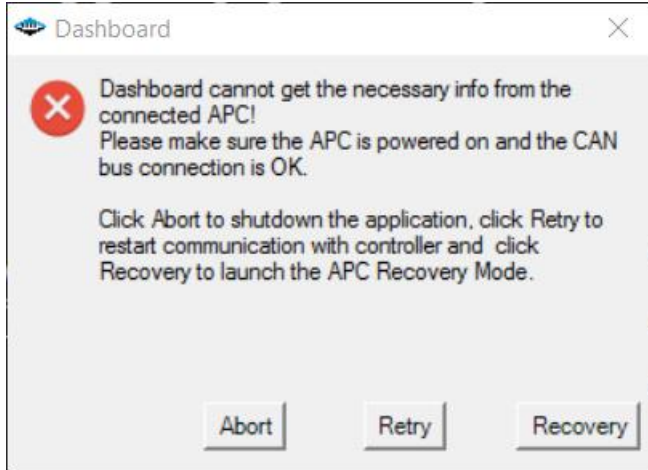
8.1.3 Invalid license key found.

If there is no license key found while starting up, you will be prompted to fill in your license key. If the current license key info was invalid, a critical error will be shown. Dashboard cannot continue and will be closed.

8.1.4 Dashboard cannot get necessary information



Please turn on the ignition, check your CAN connection and try again!



Your transmission controller is turned on, CAN communication is OK; but some parameter file settings were not filled in correctly. The APC will not be licensed to use the Dashboard software. Click “Recovery” to start the Recovery Mode to upgrade your parameter file!



8.2 Troubleshooting while running Dashboard.

8.2.1 No communication with APC.

When the communication indicator on the bottom left of the screen turns red there is no communication between the APC and your computer. Make sure the APC controller is turned on and your Dana licensed dongle is attached. If your Dana licensed dongle is attached, try to initialize it again from the “Global Settings” form or by clicking the “Reconnect” button at the bottom right of the screen.

REMARK: For more troubleshooting, view the help files which you can access in the Dashboard by clicking “Help - Help” in the menu bar of Dashboard or by using the Windows Start->Programs menu.

This Dashboard Software is licensed to You under the NON-EXCLUSIVE END USER SOFTWARE PRODUCT LICENSE AGREEMENT. You can access a copy of the Agreement by going to the help menu, license key and view license.

Unauthorized use may result in prosecution.

Copyright © 2003-2018 Spicer Off-highway Belgium, BV. All rights reserved.